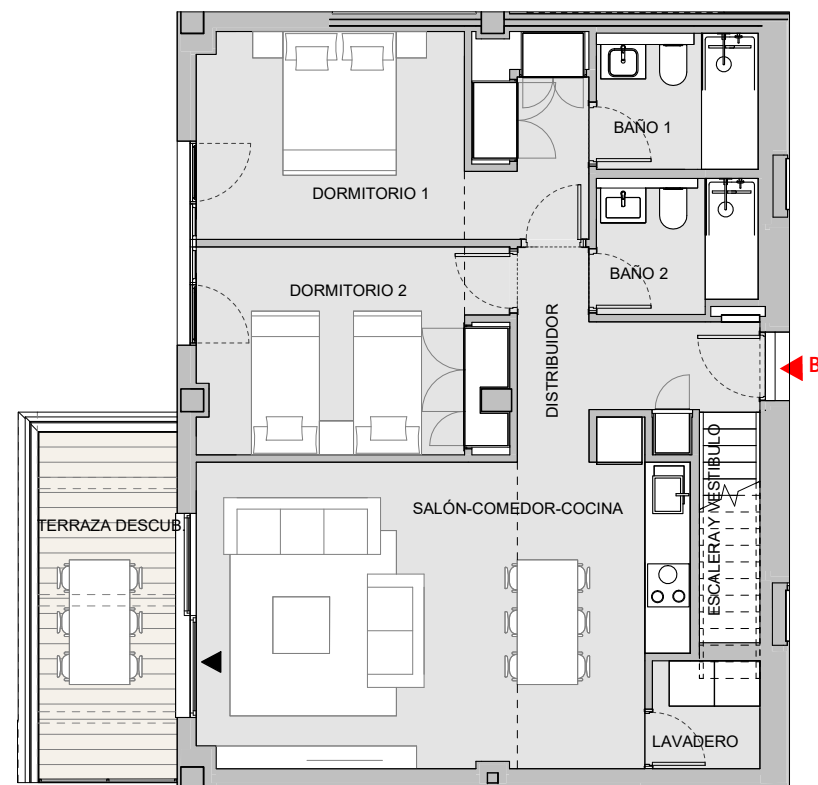


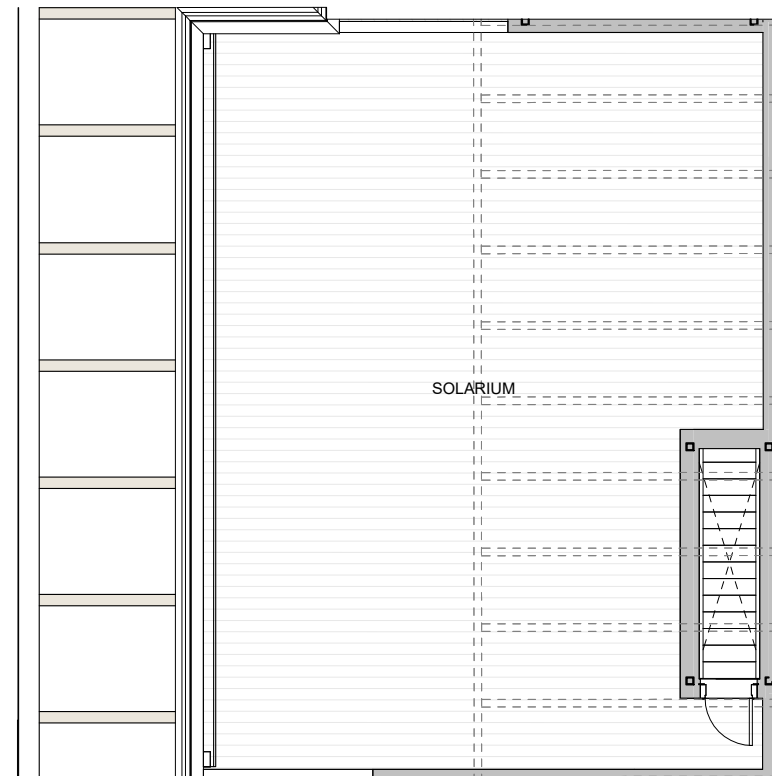


## BLOQUE 06 - PORTAL 2

### PLANTA SEGUNDA - PUERTA B



Planta segunda



Cubierta

#### Superficies

|   |                      | Decreto<br>218/2005  |
|---|----------------------|----------------------|
| SUPERFICIE UTIL TOTAL PRIVATIVA                 | 78.28m <sup>2</sup>  | 76.87m <sup>2</sup>  |
| SUPERFICIE CONSTRUIDA INTERIOR                  | 82.80m <sup>2</sup>  |                      |
| SUPERFICIE CONSTRUIDA ZONAS COMUNES             | 11.97m <sup>2</sup>  |                      |
| SUPERFICIE CONSTRUIDA TOTAL                     | 173.35m <sup>2</sup> | 103.05m <sup>2</sup> |
| *Incluye la sup. de las terrazas y los jardines |                      |                      |
| DORMITORIO 2                                    | 11.22 m <sup>2</sup> |                      |
| SALÓN-COMEDOR-COCINA                            | 26.40 m <sup>2</sup> |                      |
| BAÑO 1  | 3.98 m <sup>2</sup>  |                      |
| BAÑO 2  | 3.74 m <sup>2</sup>  |                      |
| DISTRIBUIDOR                                    | 2.70 m <sup>2</sup>  |                      |
| LAVADERO  | 2.13 m <sup>2</sup>  |                      |
| DORMITORIO 1                                    | 14.17 m <sup>2</sup> |                      |
| ESCALERA Y VESTIBULO                            | 5.54 m <sup>2</sup>  |                      |
|   |                      |                      |
| SUPERFICIE UTIL INTERIOR                        | 69.88 m <sup>2</sup> |                      |
|   |                      |                      |
| SUP. CONSTRUIDA PRIVATIVA EXTERIOR              | 78.58 m <sup>2</sup> |                      |
| SUP. UTIL PRIVATIVA EXTERIOR                    | 77.25 m <sup>2</sup> |                      |
|   |                      |                      |
| SOLARIUM  | 68.85 m <sup>2</sup> |                      |
| TERRAZA DESCUB.                                 | 8.40 m <sup>2</sup>  |                      |

